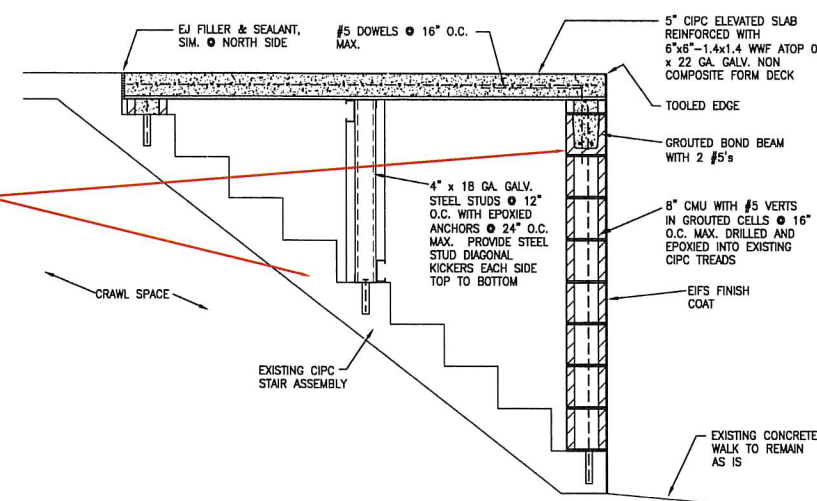


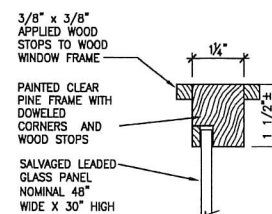
Remove existing Level Walkway (456 ft²)

Remove Stair Concealment & CIPC Stair Assembly

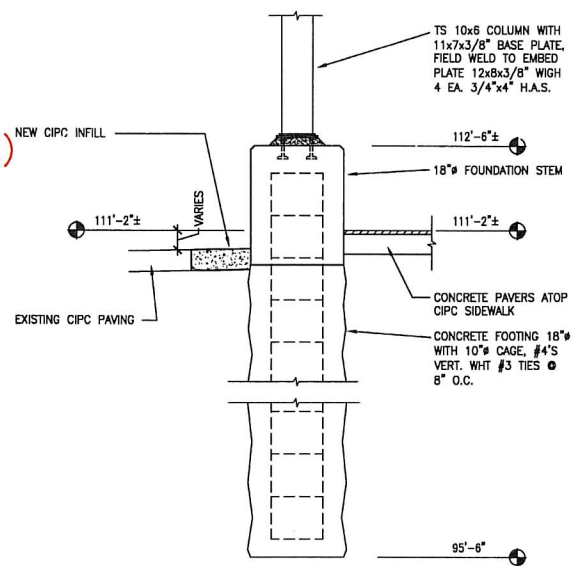
Remove & Salvage existing railing (82 ft)



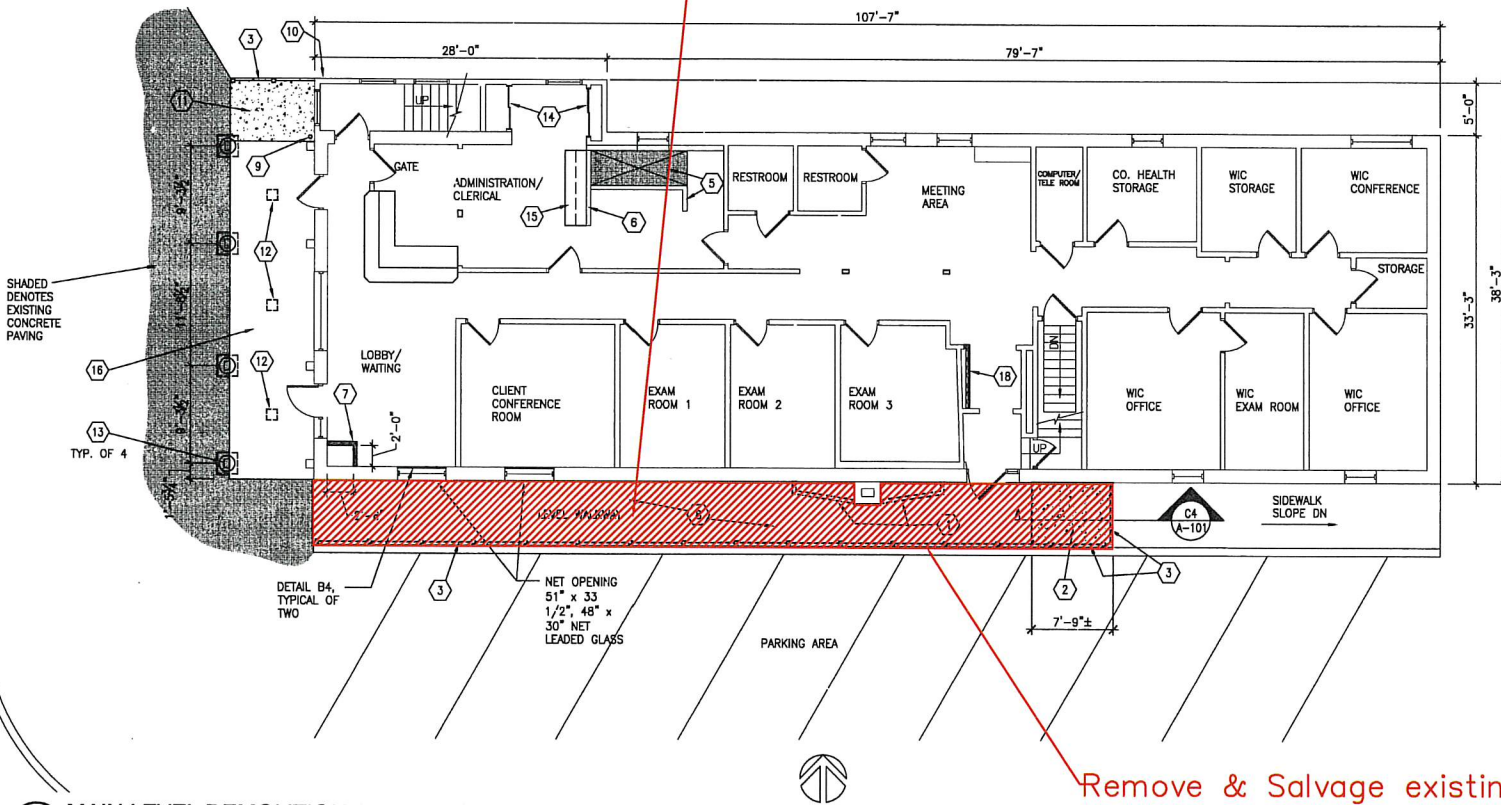
C4 EXTERIOR STAIR CONCEALMENT
SCALE: 3/4" = 1'-0"



B4 "PICTURE FRAME" FOR LEADED GLASS
SCALE: 6" = 1'-0"



A4 COLUMN FOUNDATION DETAIL
SCALE: 3/4" = 1'-0"



B1 MAIN LEVEL DEMOLITION AND RENOVATION FLOOR PLAN
SCALE: 1/8" = 1'-0"

SHEET KEYNOTES

- REMOVE EXISTING BRICK PLANTERS WITH STUCCO FINISH, NOMINAL 3' HIGH, INCLUDE SOIL MATERIAL. SEE EXISTING EXTERIOR ELEVATION, REPAIR STUCCO FLUSH WITH FACE OF ADJACENT WALL.
- EXISTING CIPC STAIRS TO BE CONCEALED, REFER TO DETAIL C4/A-100
- NEW ANODIZED ALUMINUM GUARDRAIL
- SALVAGED LEADED GLASS TO BE INSTALLED IN RABBETED 5/4" CLEAR PINE "PICTURE FRAME" PER DETAIL B4.
- EXISTING GWB CLAD WOOD FRAMED GUARDRAIL & FLOOR INFILL TO REMAIN AS IS.
- EXISTING GWB CLAD WOOD FRAMED FULL HEIGHT PARTITION TO REMAIN AS IS.
- 2x4 FRAMED CHASE FOR SPRINKLER RISER WITH PAINTED 5/8" GWB CLADDING, MATCH EXISTING WOOD BASE. PROVIDE TWO EACH, 12" SQUARE GRILLES FOR AIR CIRCULATION, ONE HIGH AND ONE LOW.
- ALONG LENGTH OF EXISTING CONCRETE WALKWAY ARE FIVE NORTH/SOUTH RUNNING CRACKS. USE PAVEMENT ROUTER TO CREATE A 3/4" DEEP GROOVE, FILL WITH URETHANE SEALANT.
- REMOVE EXISTING SHEET METAL DOWNSPOUT OUTLET NOZZLE TO A DEPTH OF 2" BELOW CIPC WALK SURFACE. PROVIDE SHEET METAL PLUG AND NON-SHRINK GROUT, FILL FLUSH WITH WALK SURFACE.
- REMOVE EXISTING SHEET METAL OUTLET NOZZLE TO DEPTH OF 2" IN CIPC WALL, PROVIDE MORTAR & CMU PLUG FLUSH WITH WALL SURFACE.
- PROVIDE COLORED CONCRETE TOPPING AT DEPRESSED/SLOPED CONCRETE SLAB, APPLY EPOXY BONDING AGENT TO SLAB SURFACE PRIOR TO POURING OF TOPPING.
- SAWCUT MINIMAL OPENING IN STUCCO SOFFIT TO REMOVE EXISTING RECESSED LIGHTS.
- NEW PAINTED TUBULAR COLUMNS, REFER TO DETAIL B1/A-501.
- EXISTING RECESSED DOORED STORAGE TO REMAIN AS IS.
- EXISTING BASE CABINETS WITH UPPERS TO REMAIN AS IS.
- EXISTING BRICK PAVEMENT SIDEWALK TO REMAIN AS IS.
- SELECTIVELY REMOVE AND SALVAGE BRICK PAVERS FOR RE-USE AND INSTALLATION ON NEW ADDED COLUMN LOCATIONS. SAWCUT PAVERS TO INFILL AROUND NEW TS CIPC COLUMN FOOTING.
- 2x4 STUDS @ 16" O.C. WITH PAINTED 5/8" GWB FURRED AREA FOR ELECTRICAL CONDUITS TO SECOND FLOOR.



To Solve. To Excel. Together.
TSP, Inc.
One S. Scott St.,
P.O. Box 1039
Sheridan, WY 82801
phone: (307) 672-6496
fax: (307) 672-7487
www.learntsp.com

Architecture
Engineering
Construction

CONSULTANTS:



PROJECT TITLE:
Sheridan County
Public Health Building
Upgrades
Sheridan, Wyoming

ISSUES:

NO.	DATE	DESCRIPTION

REVISIONS:

MARK	DATE	DESCRIPTION

TSP PROJECT #: 02091340
DRAWN BY: ---
CHECK BY: ---
© TSP 2016

SHEET TITLE:
EXISTING
MAIN LEVEL FLOOR PLAN
Public Health
Bldg Project
2019

SHEET NUMBER:
A-101

DRAWINGS ARE TO SCALE UNLESS REDUCED FROM ORIGINAL 24" x 36" FORMAT
CONSTRUCTION DOCUMENTS 2-24-2010